



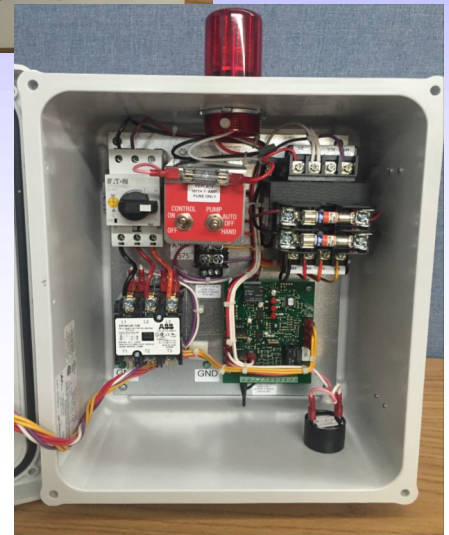
Wastewater

FEATURES—Simplex

- Rugged NEMA 4X construction withstands even the most severe weather conditions and prevents corrosion.
- Solid state control board displays float status for ease of installation and troubleshooting.
- Hinged door with lockable stainless steel latch for safe operation indoors and out.
- High level alarm circuit includes spring loaded through door mounted silence switch for manual silence of alarm horn.
- Through door mounted pump run light.
- Top mounted high intensity flashing red light provides 360° visibility.
- Pulsating, corrosion proof alarm horn.
- Auxiliary alarm contacts provided for remote alarm connection.
- Entire unit is UL and CUL listed.



Voltage
208V
230V
460V
575V



Available Options - SIMPLEX	Model #
Elapsed Timer Meter	115PSIBFS740
Lighting Arrestor 1Ph	115PSIBFS790
Lighting Arrestor 3Ph	115PSIBFS800
Simplex Seal Fail Circuit with Pilot Lights	115PSIBFS350
Condensation Heater	115PSIBFS710
High Temp	HTS
Hubbel Generator Receptacle Female End Only with Main-Emergency Power Transfer Switch	
Generator Male Receptacle to Match for 30 AMPS	
Generator Male Receptacle to Match for 60 AMPS	
Simplex Replacement Circuit Board	115PSIBFI-LLC 120-SIM

WASTE-WATER SIMPLEX CONTROL PANELS			
MODEL #	AMPS*	HZ	PHASE
115PSIBF120S	0-20	60	1
115PSIBF3AS	1.6-2.5	60	3
115PSIBF3BS	2.5-4.0	60	3
115PSIBF3CS	4.0-6.3	60	3
115PSIBF3DS	6.3-10	60	3
115PSIBF3ES	10-16	60	3
115PSIBF3FS	16-20	60	3
115PSIBF3GS	20-25	60	3

***AMPS BASED ON PER PUMP FLA**



Pump Solutions, Inc.
 6013 Johnson street, Hollywood, FL USA 33024
 Tel: 954-966-8483 Fax: 954-963-2289
www.pumpsolutions.us



Wastewater

FEATURES—Duplex

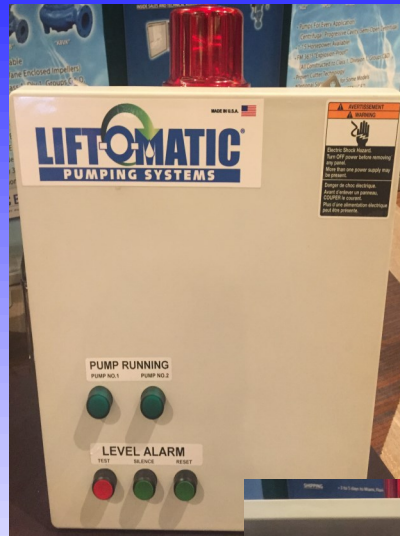
- NEMA 4X, 30 watt, flashing red light and alarm horn – 95db.
- NEMA 4X, fiberglass enclosure with gasketed, hinged door and stainless steel hardware.

Single Phase

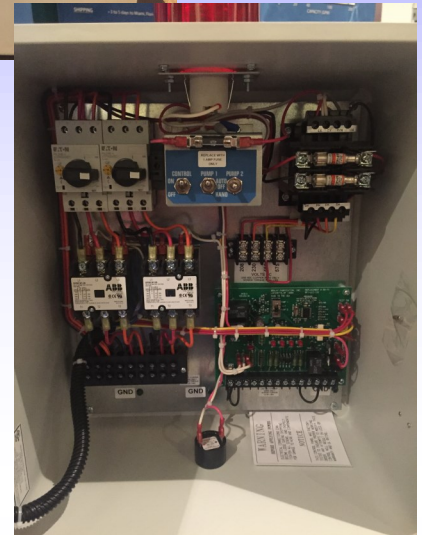
- Field adjustable for 115 or 230V, 60 Hz.
- 2 pump circuit breakers.

Three Phase

- Field adjustable for 208/230 /460/575V, 60 Hz.
- 115V control circuit transformer.
- 2 adjustable motor overload protectors.
- Heaters not required.
- Provides fully automatic operation for two pumps.
- Solid state pump alternator circuit displays float status for ease of installation and trouble shooting.
- Entire unit is UL and CUL listed.



Voltage
208V
230V
460V
575V



Available Options - DUPLEX	Model #
Elapsed Timer Meter	115PSIDBFD740
Lighting Arrestor 1Ph	115PSIDBFD790
Lighting Arrestor 3Ph	115PSIDBFD800
Duplex Seal Fail Circuit with Pilot Lights	115PSIDBFD350
Condensation Heater	115PSIDBFD710
High Temp	HTS
Hubbel Generator Receptacle Female End Only with Main-Emergency Power Transfer Switch	
Generator Male Receptacle to Match for 30 AMPS	
Generator Male Receptacle to Match for 60 AMPS	
Duplex Replacement Circuit Board	115PSIBFI-LLC 120

WASTE-WATER DUPLEX CONTROL PANELS			
MODEL #	AMPS*	HZ	PHASE
115PSIBF120D	0-20	60	1
115PSIBF3AD	1.6-2.5	60	3
115PSIBF3BD	2.5-4.0	60	3
115PSIBF3CD	4.0-6.3	60	3
115PSIBF3DD	6.3-10	60	3
115PSIBF3ED	10-16	60	3
115PSIBF3FD	16-20	60	3
115PSIBF3GD	20-25	60	3
115PSIBF3HD	22-32	60	3

***AMPS BASED ON PER PUMP FLA**



Pump Solutions, Inc.
 6013 Johnson street, Hollywood, FL USA 33024
 Tel: 954-966-8483 Fax: 954-963-2289
www.pumpsolutions.us